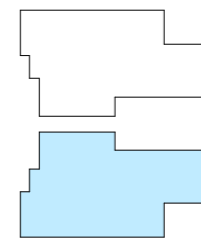





HOUSE TYPE 1A



House 57.3m²
 Carport 20.1m²
 Total 77.4m²

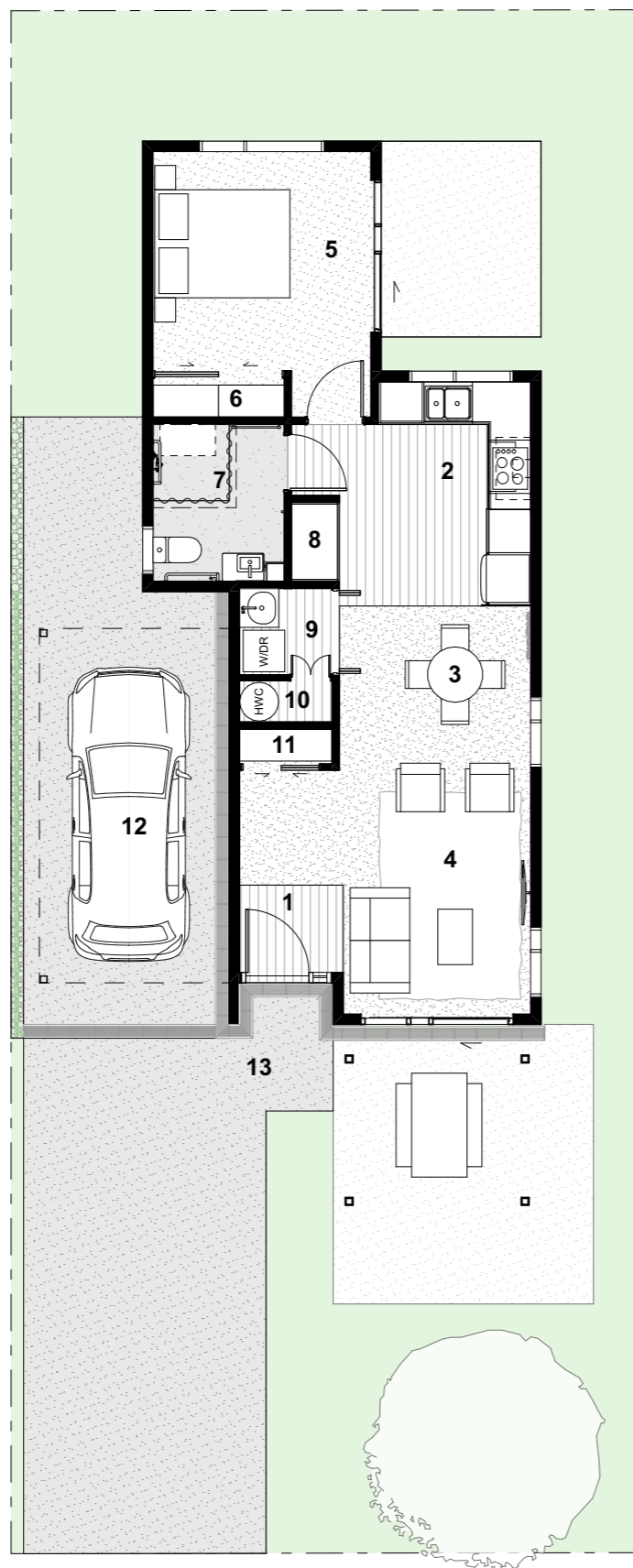
-  Carpet
-  Vinyl Plank Flooring
-  Bathroom Vinyl

PLAN KEY

1. Entry
2. Kitchen
3. Dining
4. Living
5. Bedroom
6. Wardrobe
7. Acc. Bathroom
8. Pantry
9. Laundry
10. Linen/HWC
11. Storage/Coats
12. Carport
13. Accessible Path

KEY FEATURES

- Single Storey
- 1 Bedroom
- Accessible Facilities
- Single attached carport
- Open plan living spaces



JTB ARCHITECTS
 jtbarchitects.co.nz

Project Details

Tewa Banks

Job Number 1947
 Project Address Jopp Street, Arrowtown

Status

PRESENTATION PLANS

Date 24/09/2024

Drawing

House Type 1A

Scale 1:100 @ A3

Drawing ID Rev

MM.1