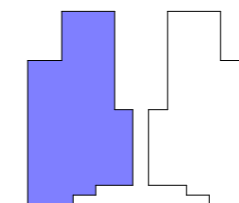

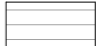


HOUSE TYPE 1B



House	57.3m ²
Carport	20.1m ²
Total	77.4m²

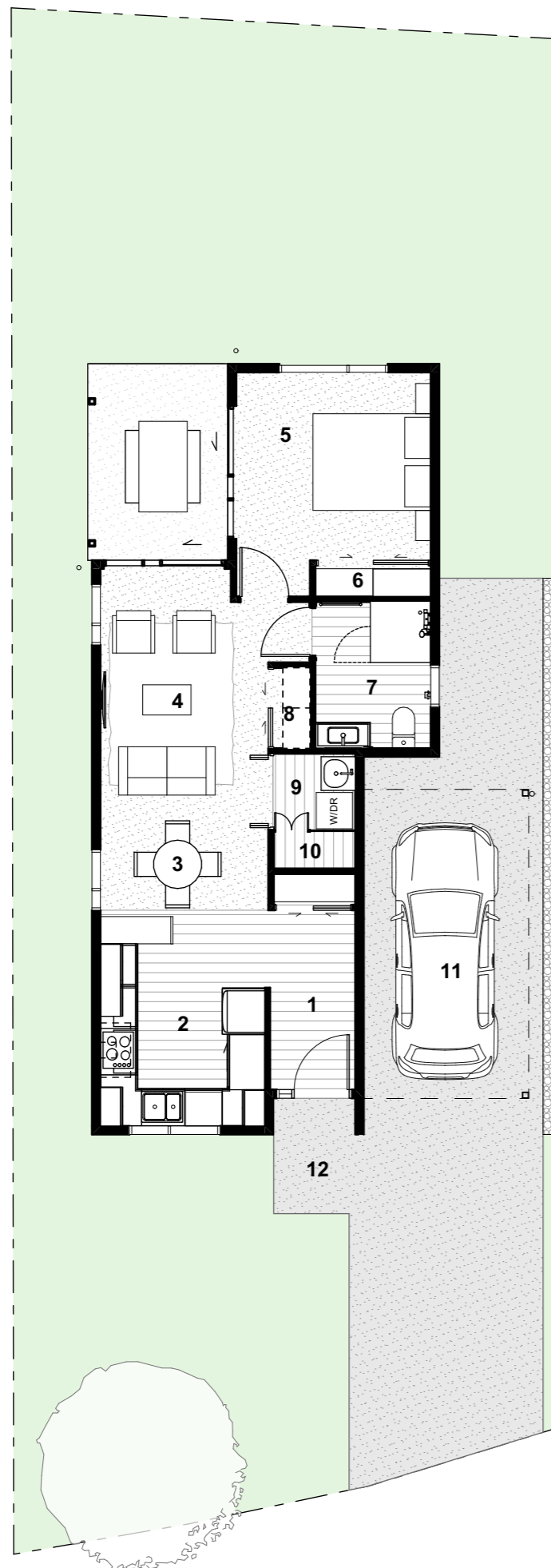
	Carpet
	Vinyl Plank Flooring

PLAN KEY

- 1. Entry
- 2. Kitchen
- 3. Dining
- 4. Living
- 5. Bedroom
- 6. Wardrobe
- 7. Bathroom
- 8. Linen
- 9. Laundry
- 10. Storage/HWC
- 11. Carport
- 12. Access Path

KEY FEATURES

- Single Storey
- 1 Bedroom
- Single attached carport
- Open plan living spaces



JTB ARCHITECTS
jtbarchitects.co.nz

Project Details

**Tewa Banks
Development**

Job Number 1947
Project Address Jopp Street, Arrowtown

Status

PRESENTATION PLANS

Date 24/09/2024

Drawing

House Type 1B

Scale 1:100 @ A3

Drawing ID Rev

MM.1