

Southern Lakes Design
6 Mace Lane, Arrowtown 9302
Central Otago, New Zealand
ph (03) 442 0487 cell 021 073 0570
shawn.combe@stra.co.nz



3 BEDROOM DWELLING (TYPE 2)
QUEENSTOWN LAKES COMMUNITY HOUSING TRUST
SHOTOVER COUNTRY

SITE PLAN

BUILDING CONSENT APPLICATION

CN-015-15

18-11-2015

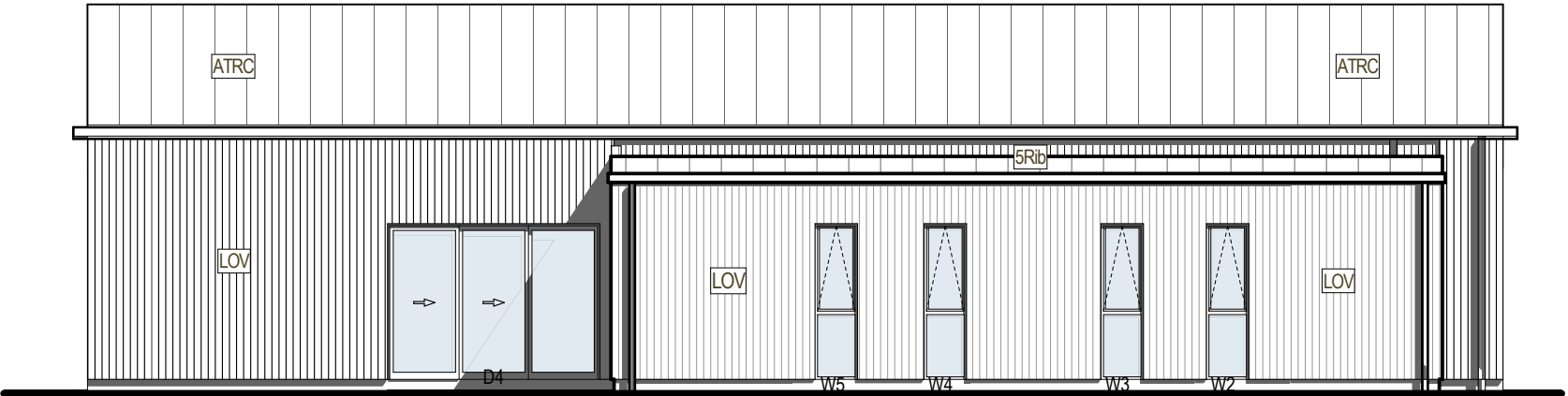
A02

BUILDING ENVELOPE RISK MATRIX		
North Elevation		
Risk Factor	Risk Severity	Risk Score
Wind zone (per NZS 3604)	Very High Risk	2
Number of storeys	Low Risk	0
Roof/wall intersection design	Medium Risk	1
Eaves width	Very High Risk	5
Envelope complexity	Medium Risk	1
Deck design	Low Risk	0
Total Risk Score:		8



NORTH ELEVATION

BUILDING ENVELOPE RISK MATRIX		
West Elevation		
Risk Factor	Risk Severity	Risk Score
Wind zone (per NZS 3604)	Very High Risk	2
Number of storeys	Low Risk	0
Roof/wall intersection design	Medium Risk	1
Eaves width	Very High Risk	5
Envelope complexity	Medium Risk	1
Deck design	Low Risk	0
Total Risk Score:		8



WEST ELEVATION

3 BED TYPE 2 - EXTERNAL ELEVATIONS

General Notes

Linea Oblique vertical 200mm cladding over H3.2 / c/w 20m horizontal vented cavity system over JH HomeRAB and 90x45mm timber framed wall.
Place Ultra R2.6 batts placed within framing.

0.55mm prefinished zincalume Alpine Tray SS675 vert. wall covering over over H3.2 / c/w 20mm horizontal vented cavity system over JH HomeRAB and 90x45mm timber framed wall.
Place Ultra R2.6 batts placed within framing.

200mm concrete blockwork - stack bond laid

0.55mm prefinished zincalume Alpine Tray SS675 roof covering over self supporting building paper on 90 x 45mm purlins @ 900mm crs over prefinished timber roof trusses @ 900mm crs.

0.4mm Zincalum 5 Rib profiled longrun sheet roof cladding fixed over Thermakraft 215 self supporting bituminous roofing underlay.

Slab - Ribraft floor system reinforced with SE62 mesh with 85mm 20 MPa concrete over 220mm pods

New Zincalume downpipe

Denotes door type No.1

Denotes window type No.1

Reference:

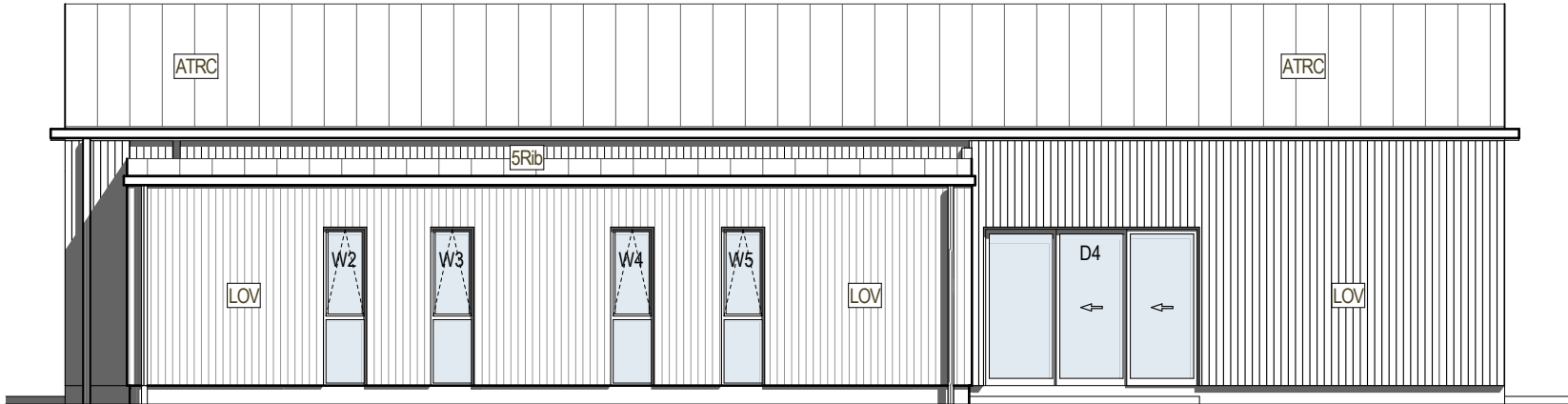
LOV	Linea Oblique vertical 200mm cladding over H3.2 / c/w 20m horizontal vented cavity system over JH HomeRAB b'd.
ATWC	0.55mm prefinished zincalume Alpine Tray SS675 vert. wall covering over over H3.2 / c/w 20mm horizontal vented cavity system over JH HomeRAB b'd.
CBLK	200mm concrete blockwork - stack bond laid
ATRC	0.55mm prefinished zincalume Alpine Tray SS675 roof covering over self supporting building paper.
5Rib	0.4mm Zincalum 5 Rib profiled longrun sheet roof cladding fixed over Thermakraft 215 self supporting building paper.
d.p	New Zincalume downpipe
D1	Denotes door type No.1
W1	Denotes window type No.1

BUILDING ENVELOPE RISK MATRIX		
East Elevation		
Risk Factor	Risk Severity	Risk Score
Wind zone (per NZS 3604)	Very High Risk	2
Number of storeys	Low Risk	0
Roof/wall intersection design	Medium Risk	1
Eaves width	Very High Risk	5
Envelope complexity	Medium Risk	1
Deck design	Low Risk	0
Total Risk Score:		8

BUILDING ENVELOPE RISK MATRIX		
South Elevation		
Risk Factor	Risk Severity	Risk Score
Wind zone (per NZS 3604)	Very High Risk	2
Number of storeys	Low Risk	0
Roof/wall intersection design	Medium Risk	1
Eaves width	Very High Risk	5
Envelope complexity	Medium Risk	1
Deck design	Low Risk	0
Total Risk Score:		8



SOUTH ELEVATION



EAST ELEVATION

Southern Lakes Design
6 Mace Lane, Arrowtown 9302
Central Otago, New Zealand
ph (03) 442 0487 cell 021 073 0570
shawn.coombe@xtra.co.nz



3 BEDROOM DWELLING (TYPE 2)
QUEENSTOWN LAKES COMMUNITY HOUSING TRUST
SHOTOVER COUNTRY

EXTERNAL ELEVATIONS

CN-015-15

18-11-2015

A04